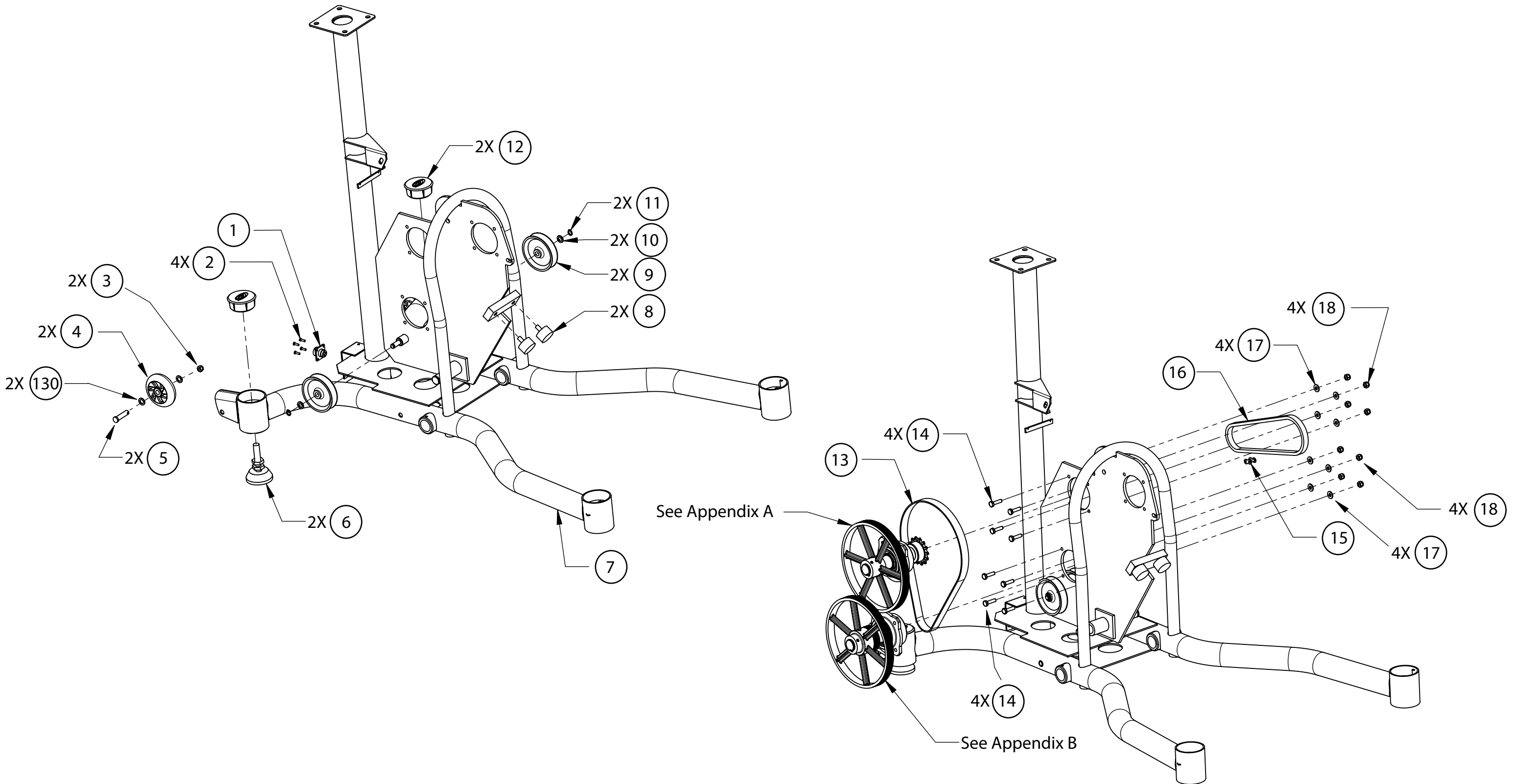
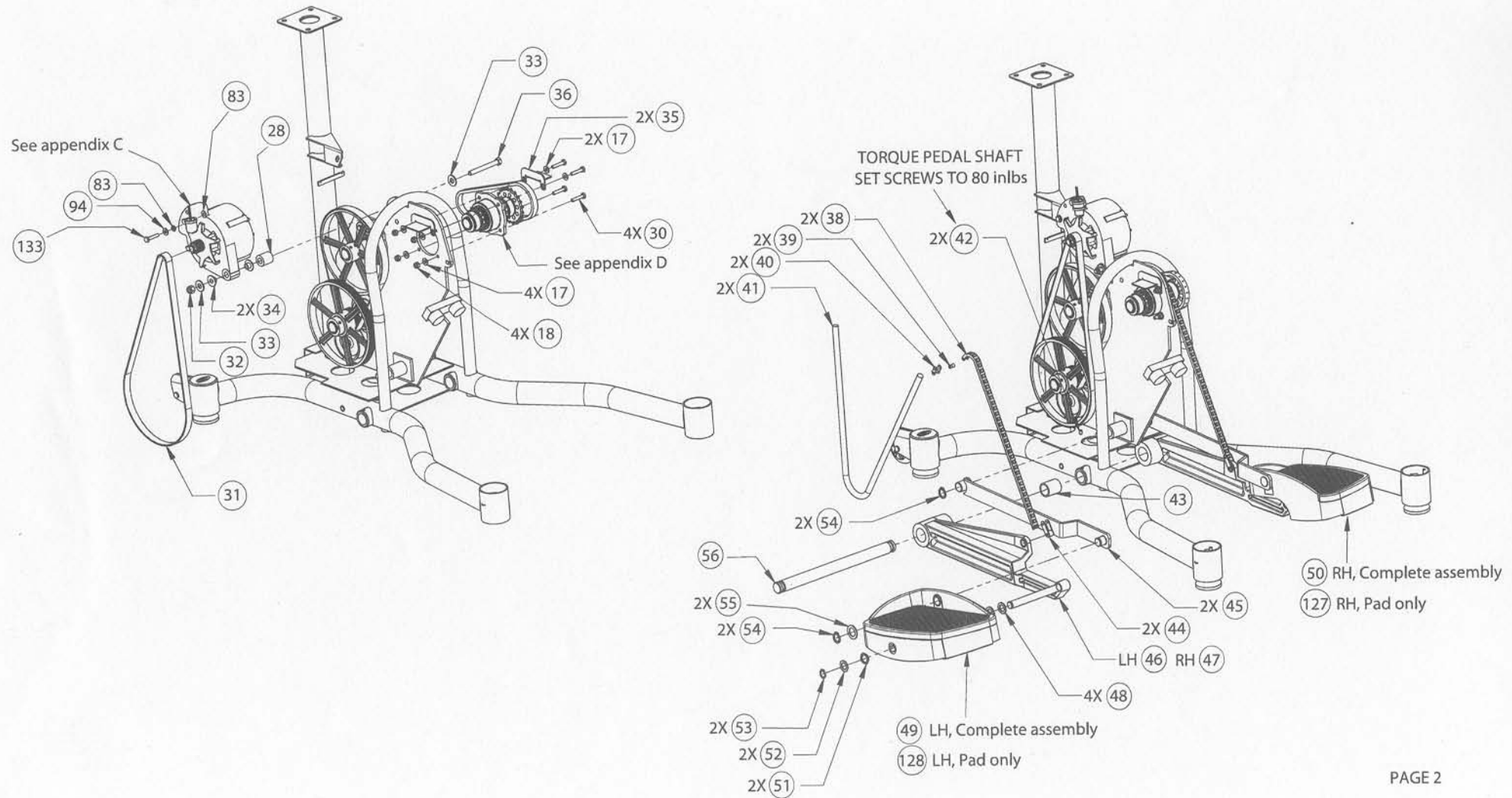


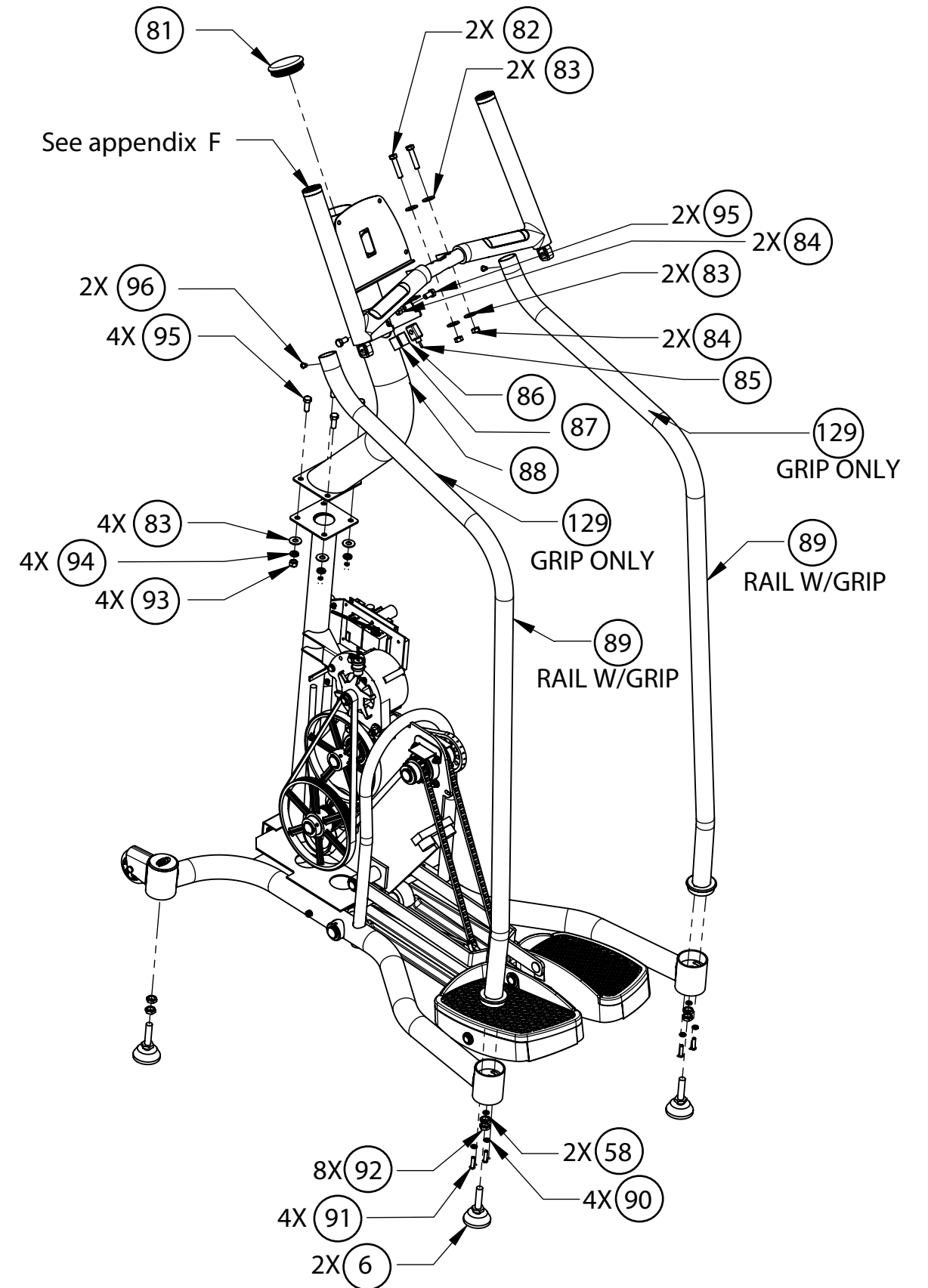
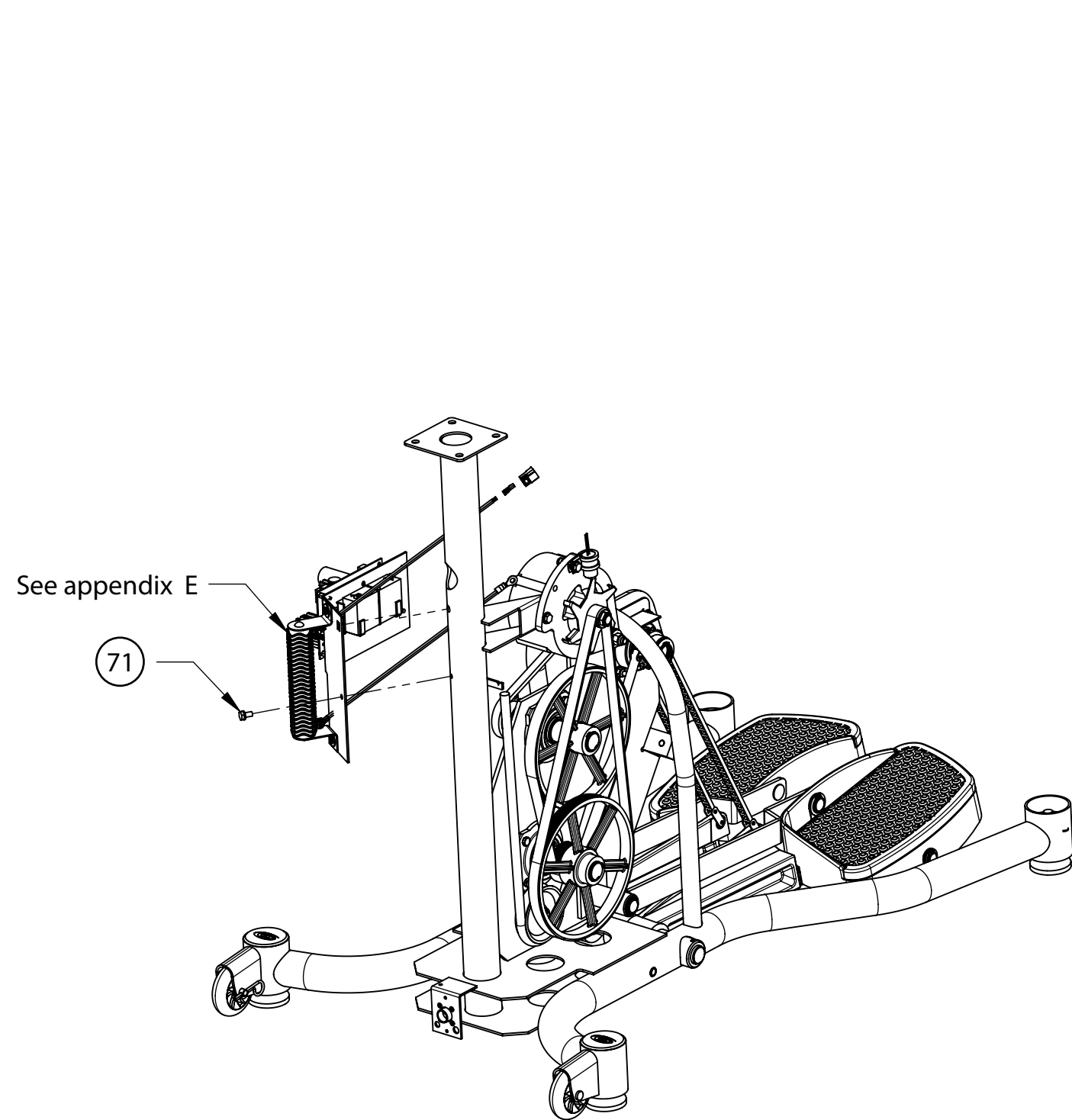
# STAIRMASTER SC916 STEPPER



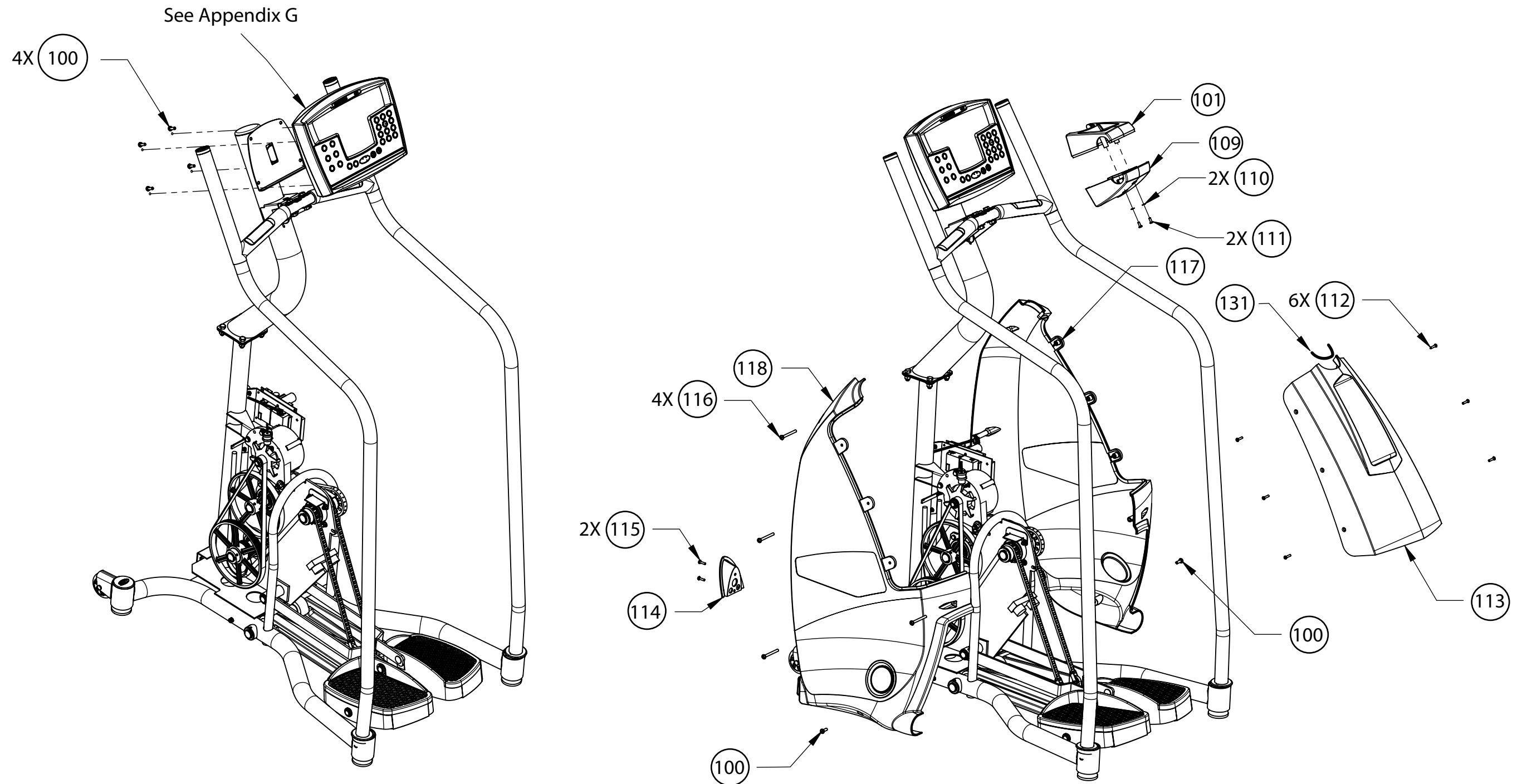
# STAIRMASTER SC916 STEPPER



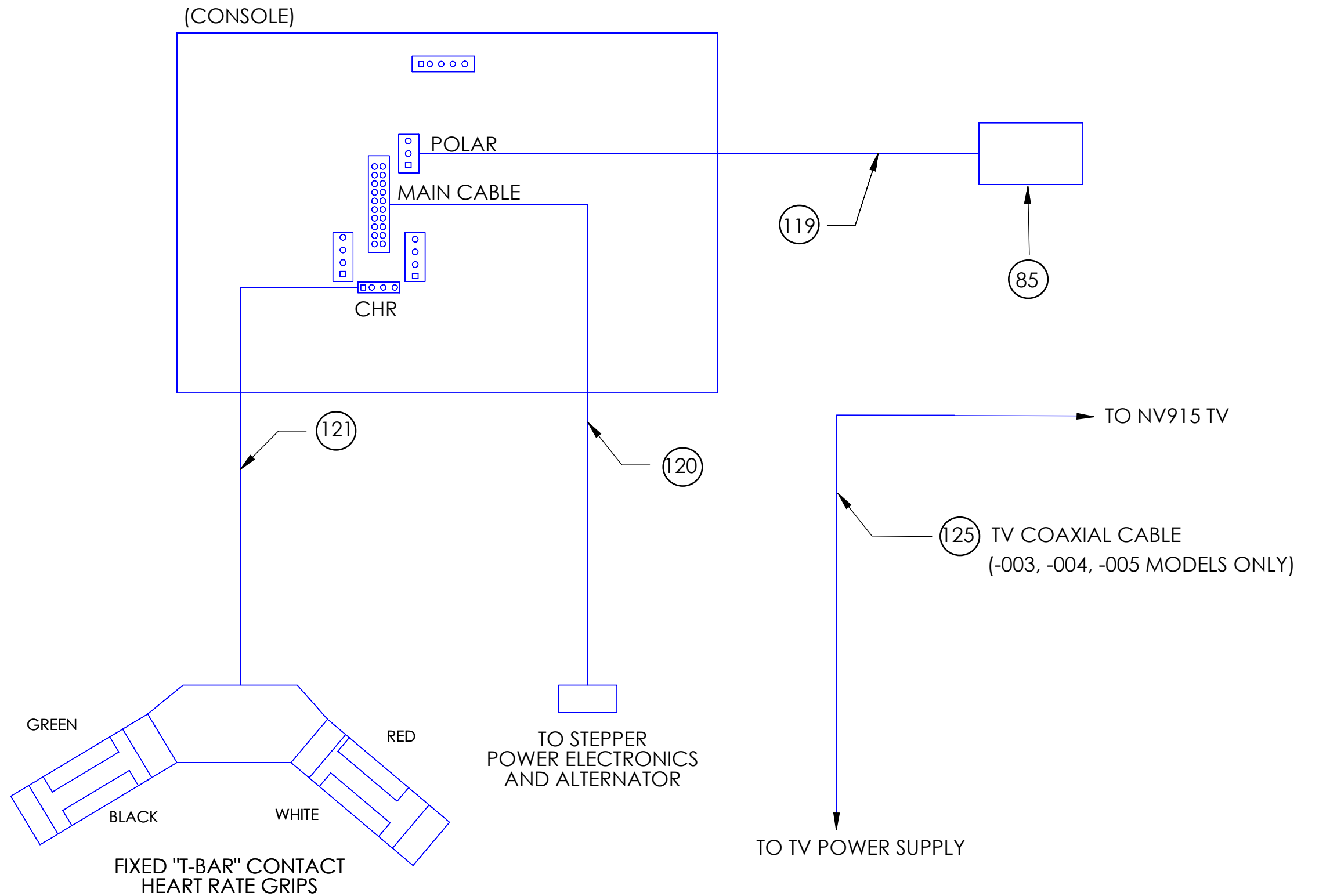
# STAIRMASTER SC916 STEPPER



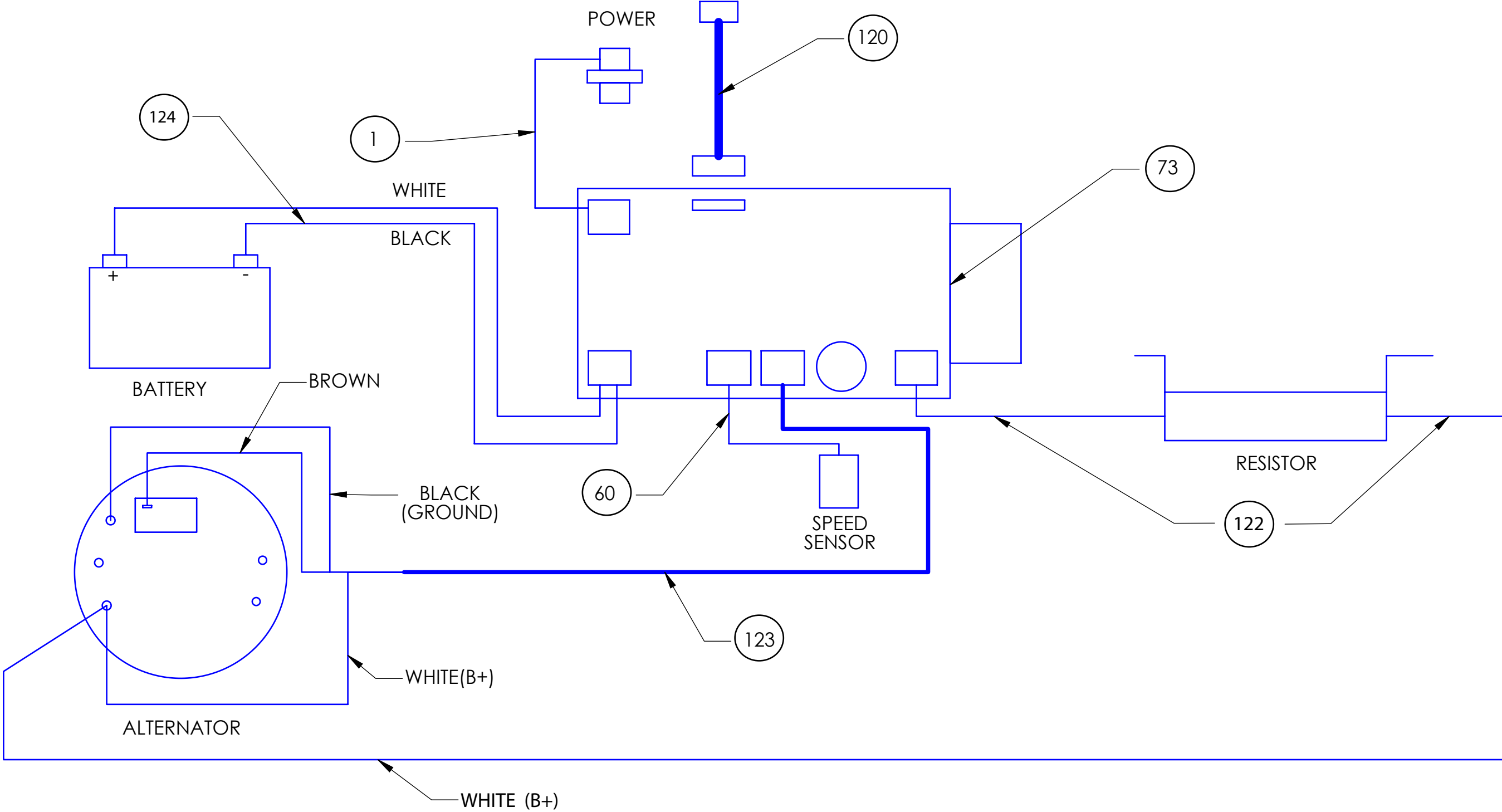
# STARMASTER SC916 STEPPER



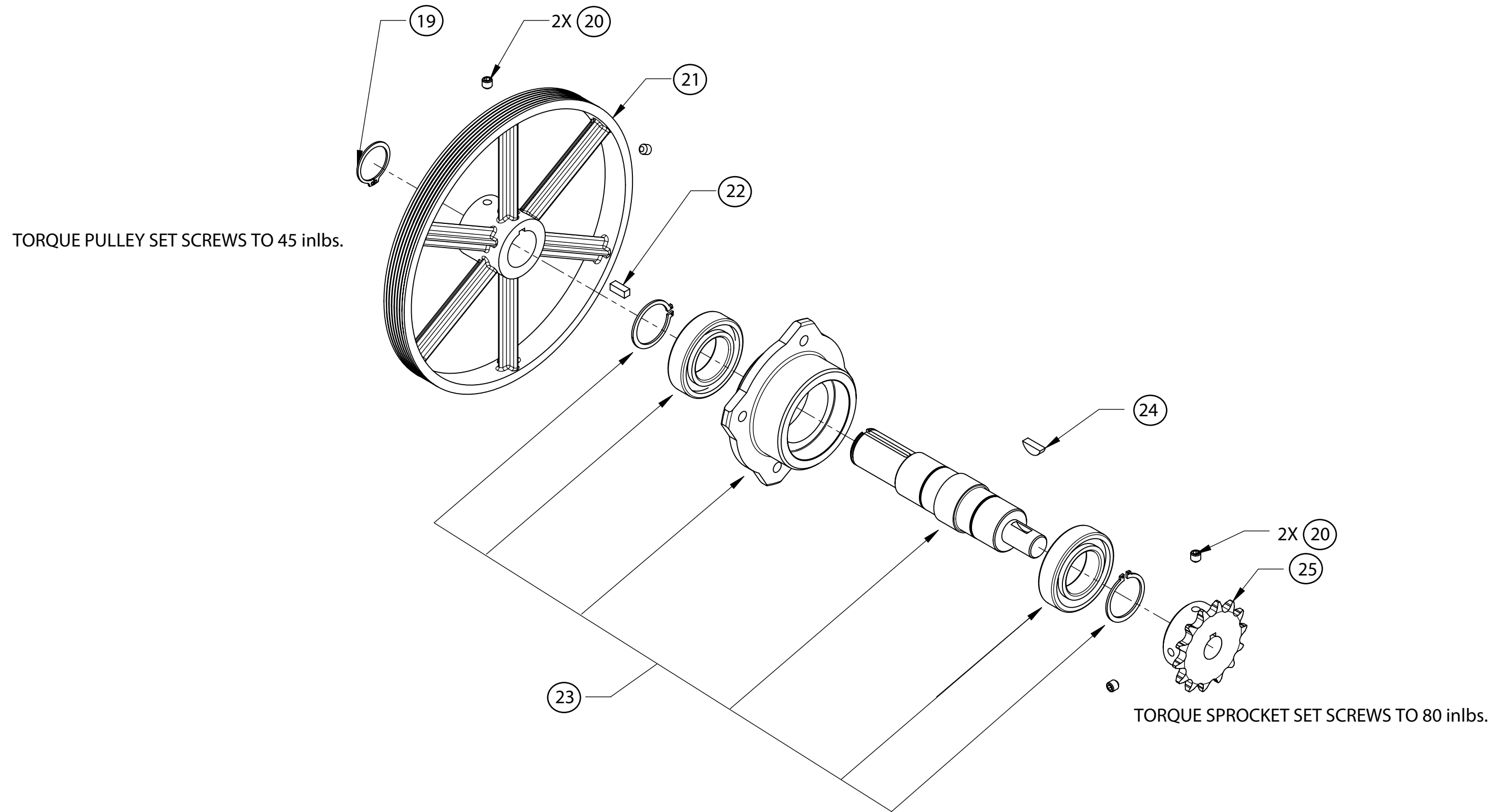
# STAIRMASTER SC916 STEPPER



# STAIRMASTER SC916 STEPPER

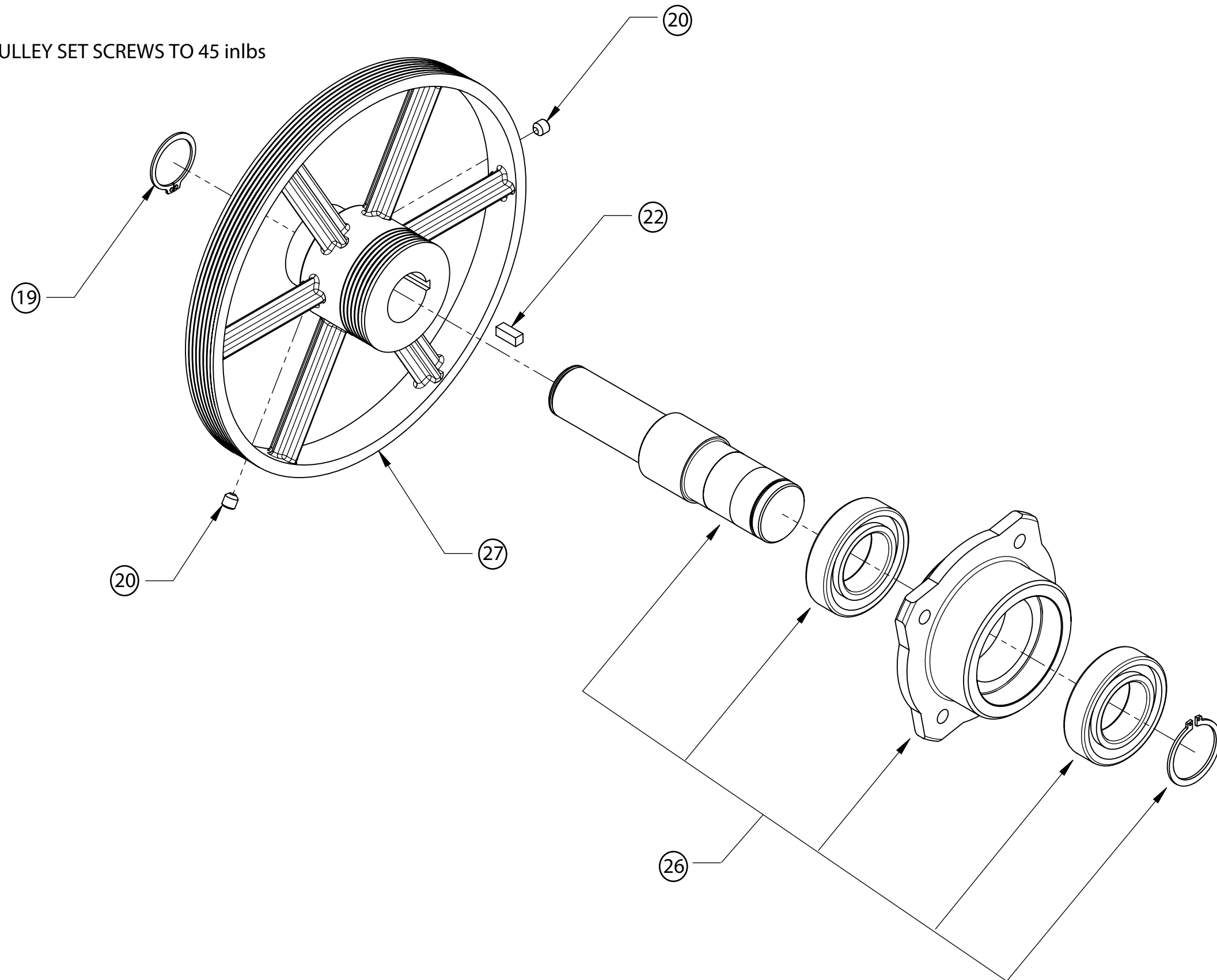


# Appendix A



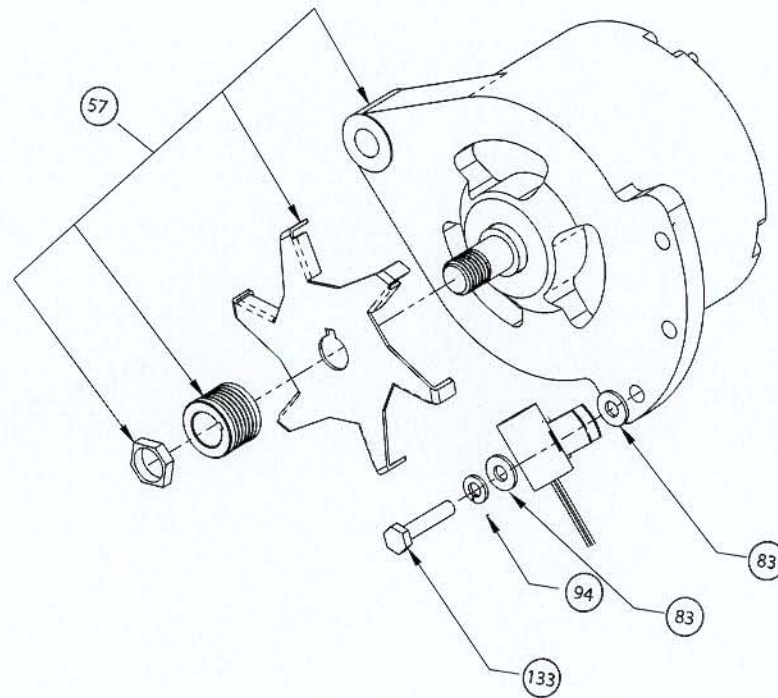
# Appendix B

TORQUE PULLEY SET SCREWS TO 45 inlbs

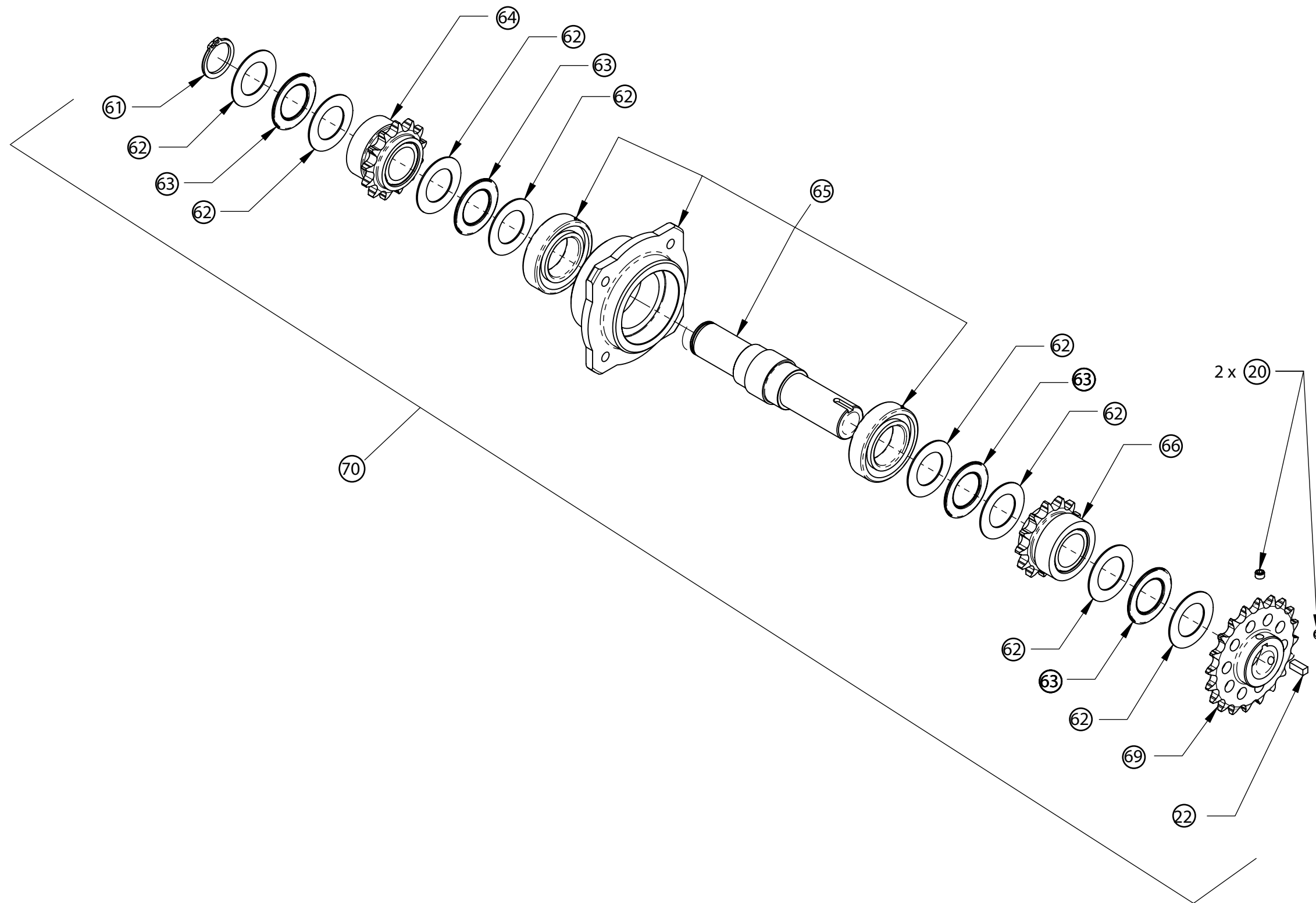




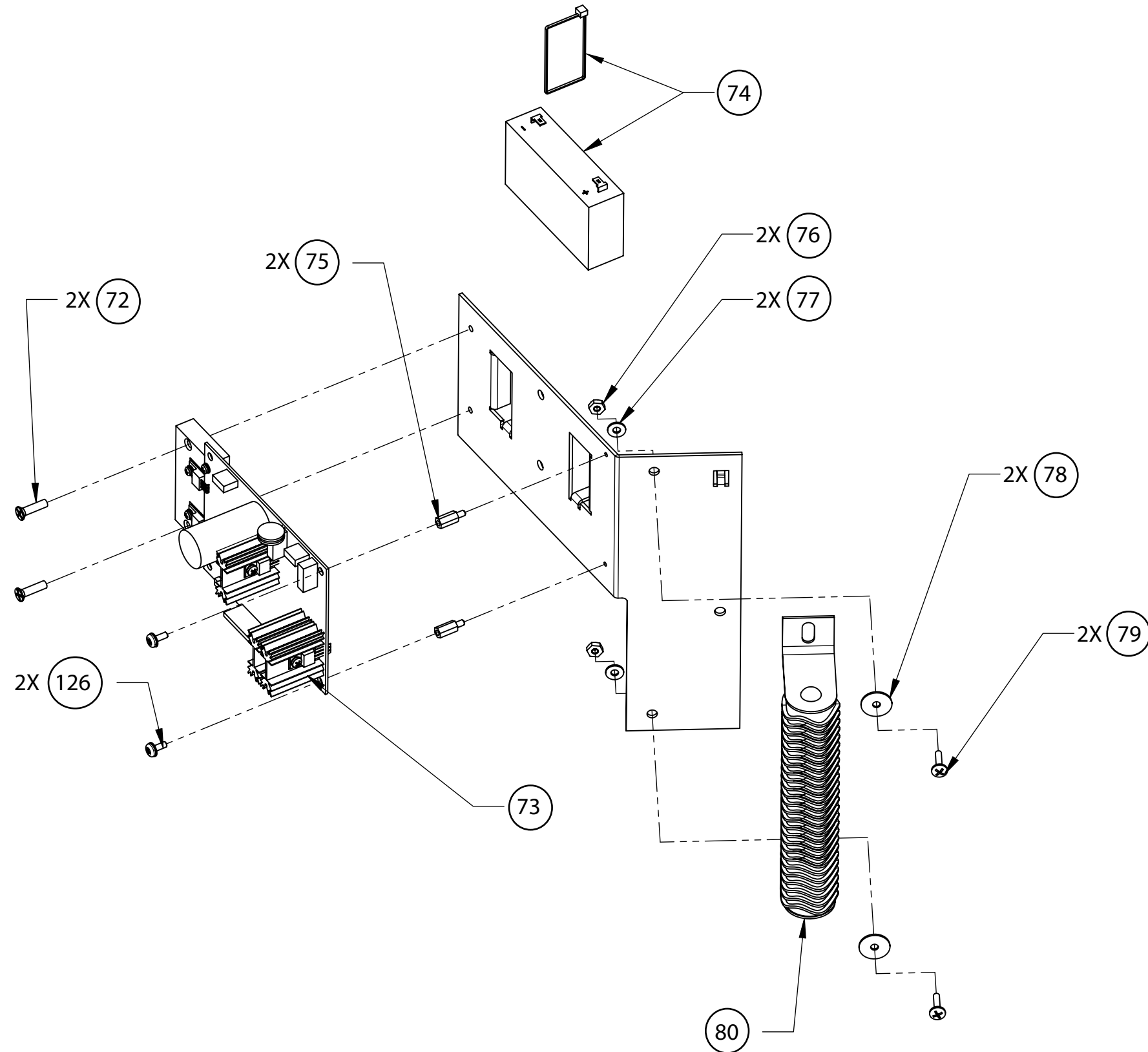
# APPENDIX C



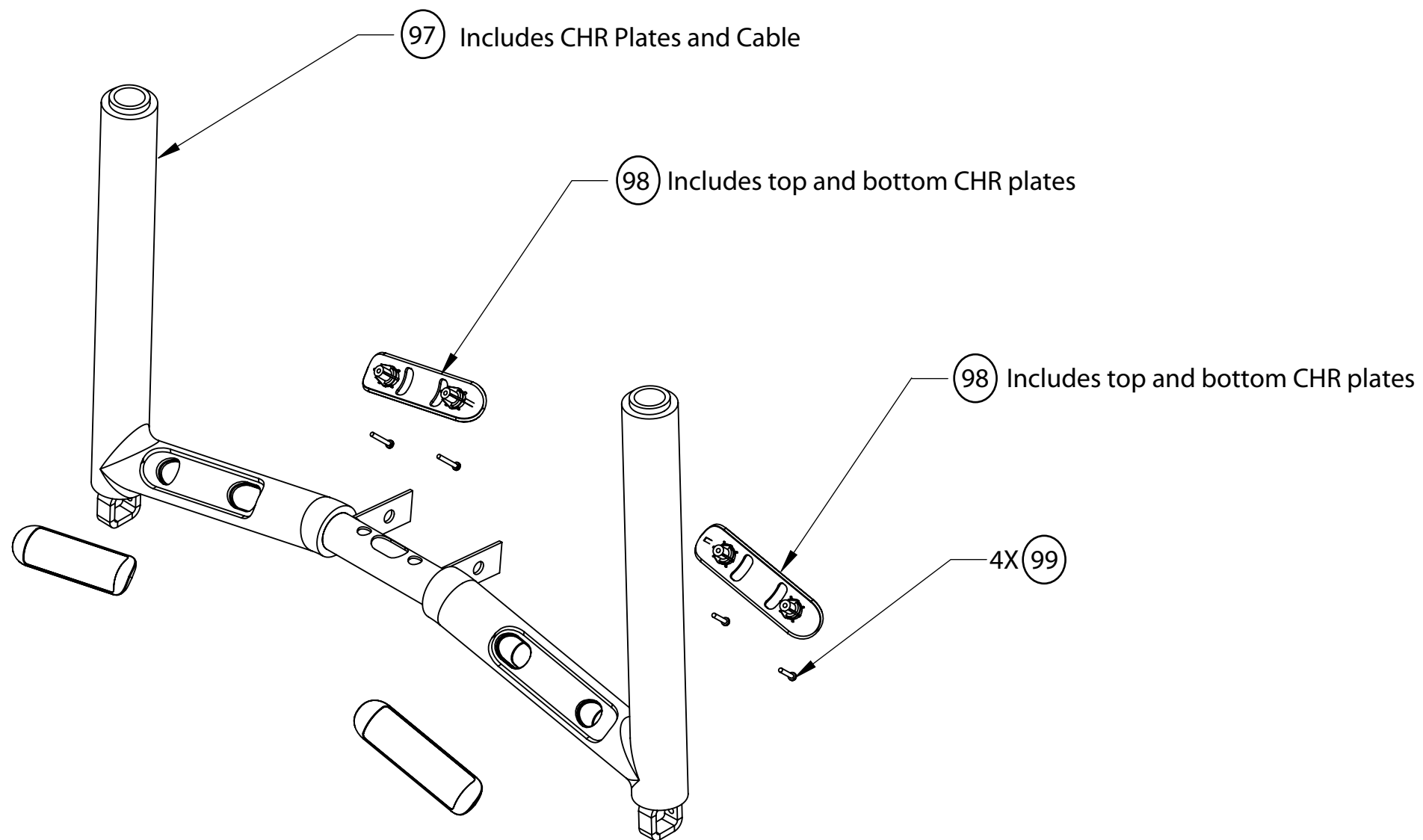
# Appendix D



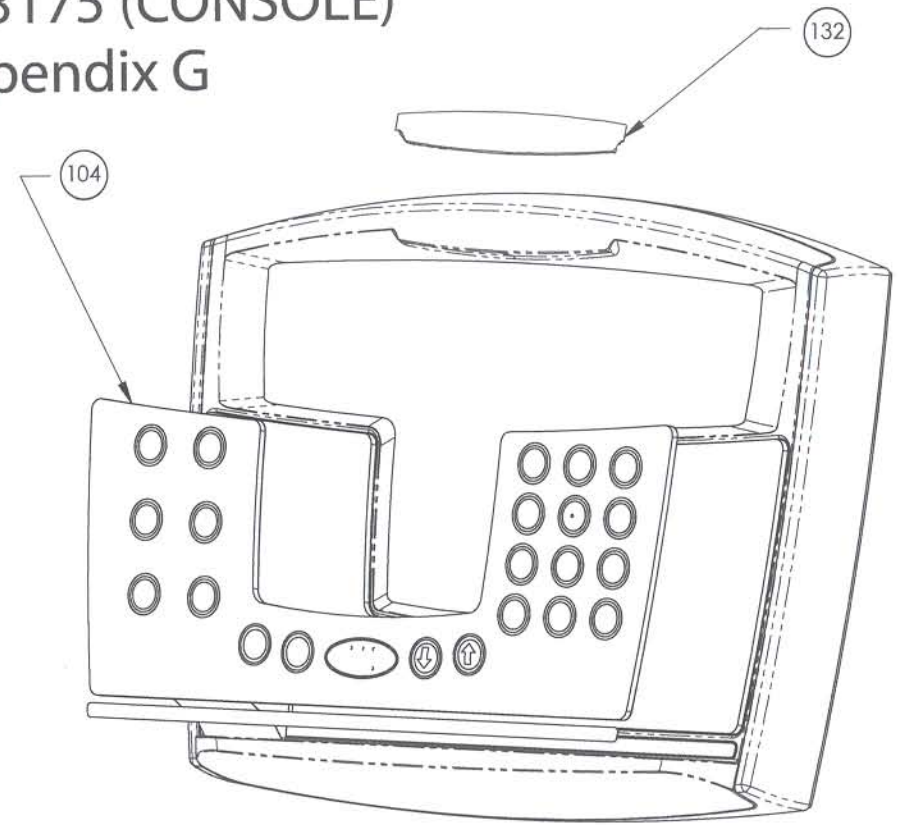
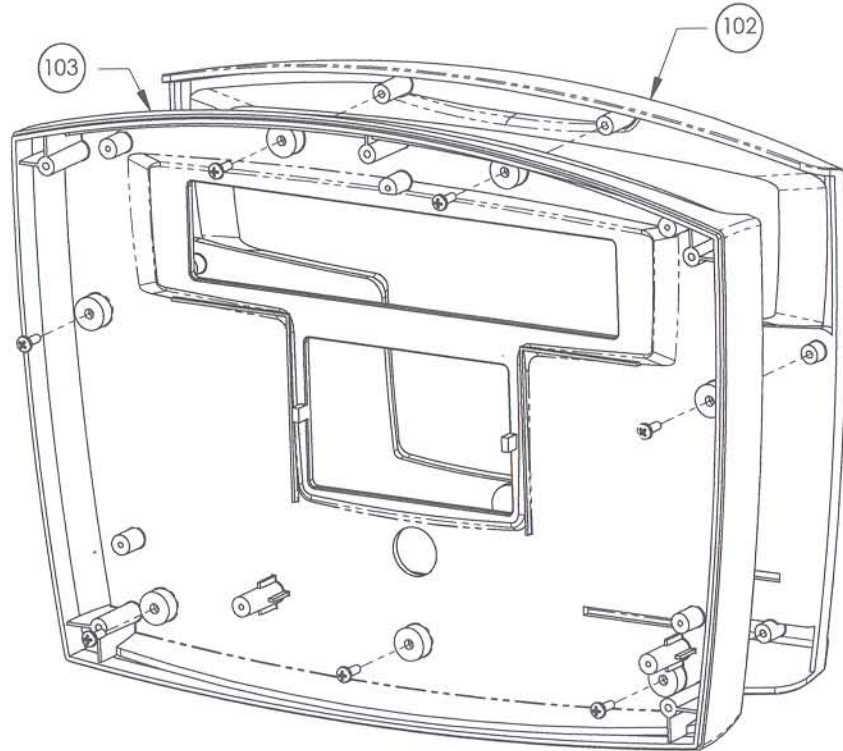
# Appendix E



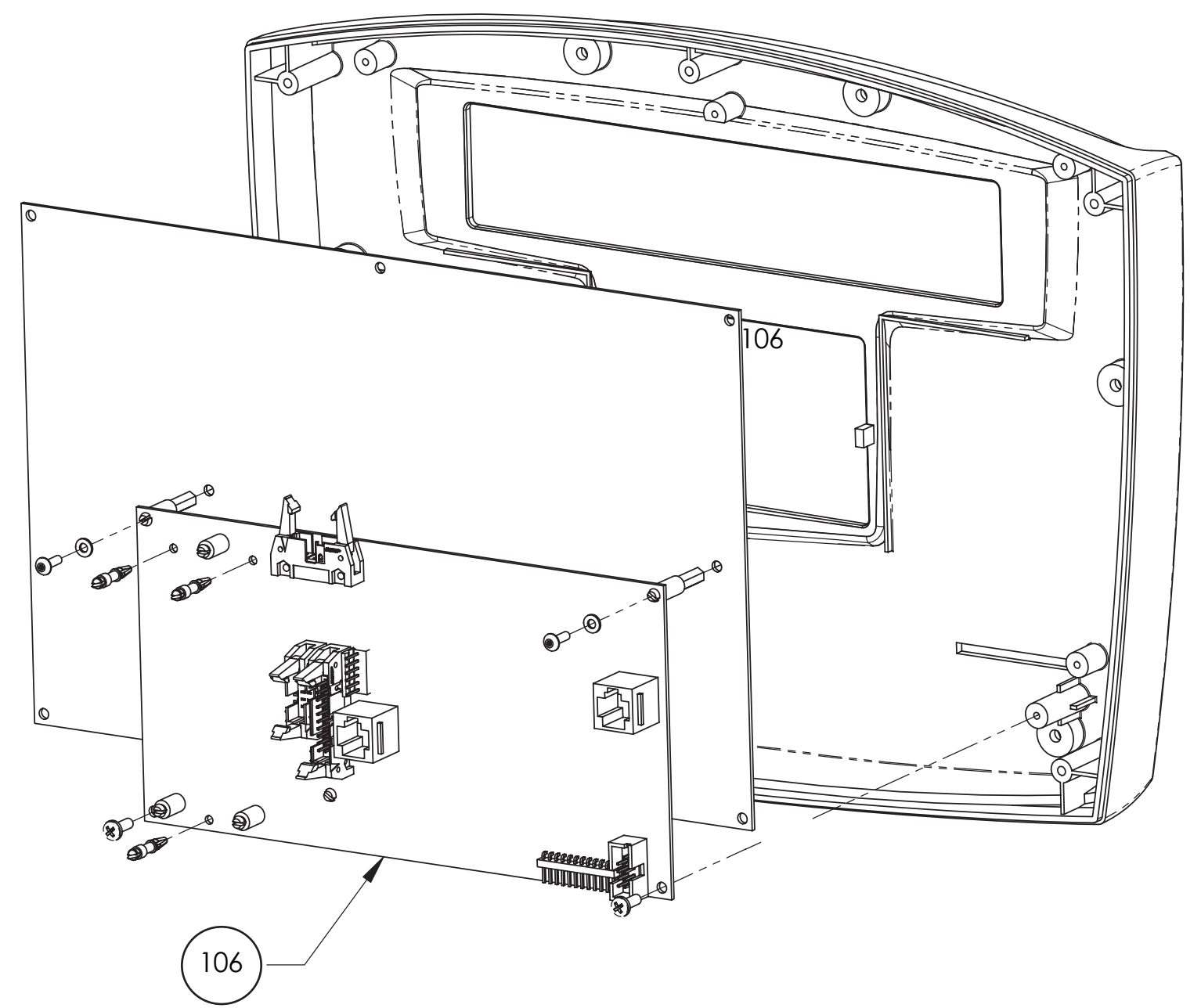
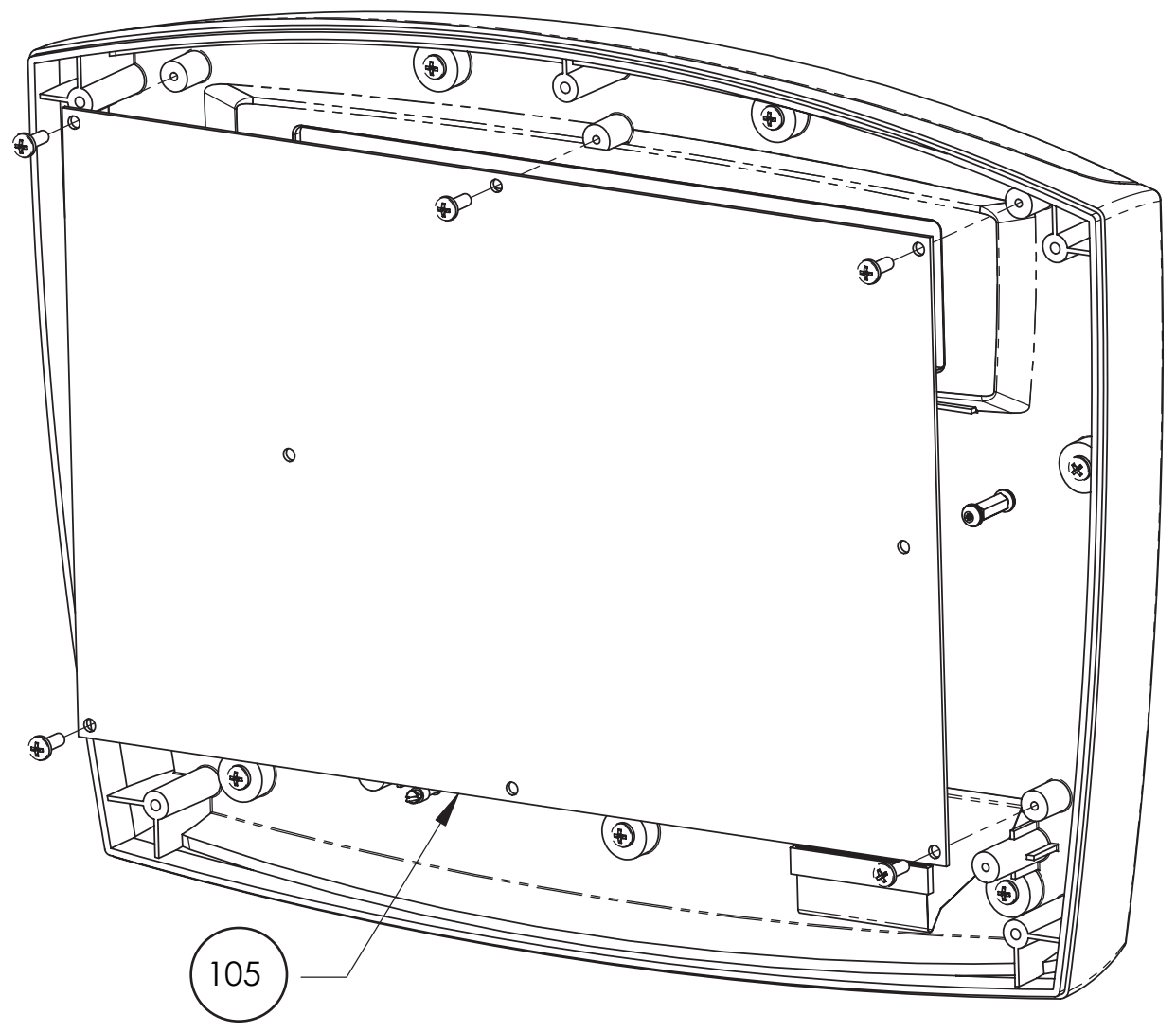
# APPENDIX F



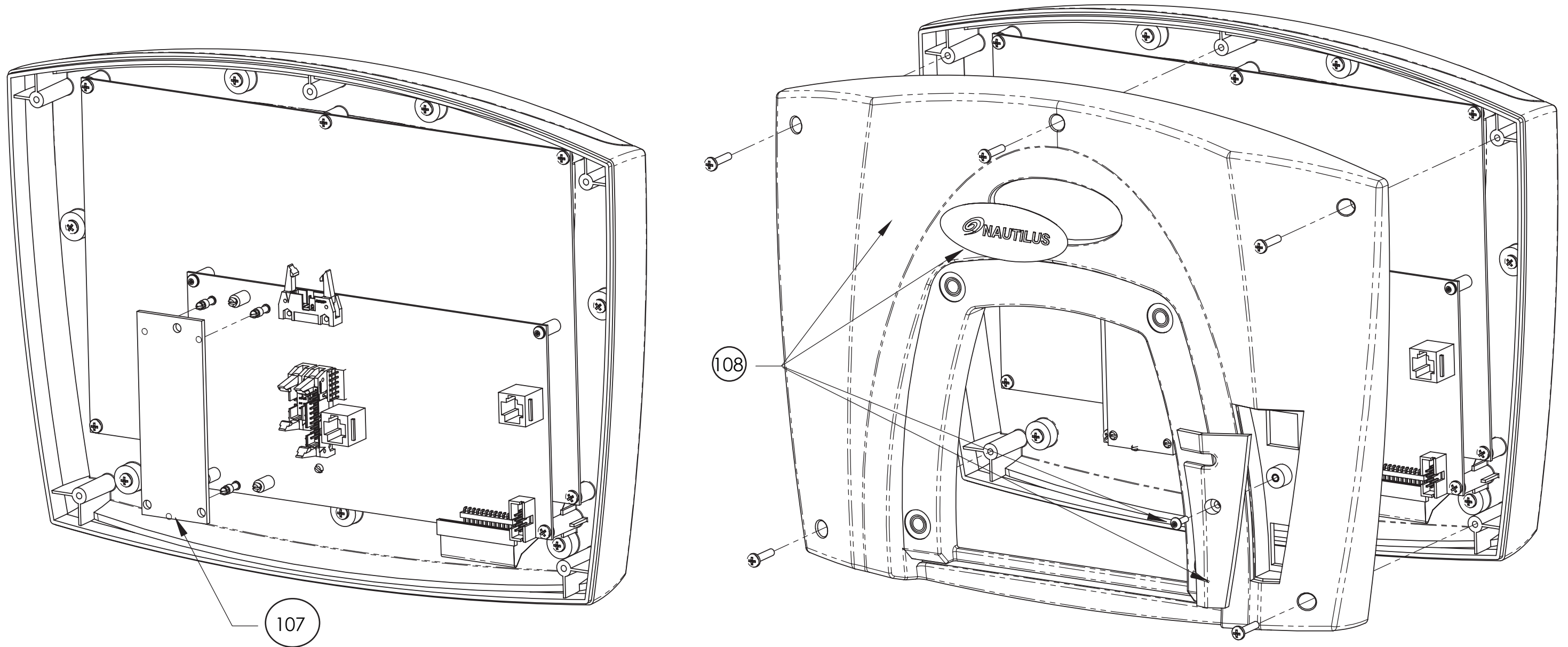
67 SM13175 (CONSOLE)  
Appendix G



67 SM13175 (CONSOLE)  
Appendix G



67 SM13175 (CONSOLE)  
Appendix G



# SC9.16 STEPPER,DOM

# (SM00130-001,-002,-004,-005)

REF.	P/N	DESCRIPTION
1	SM13587	ASSY,MAIN POWER,3300CE/3900RC
2	SM13190	SCREW,#6 X .50,82 DEG COUNTERS
3	SM24643	NUT, .375-16,HX JAM,NYLON INSRT
4	002- 0439	WHEEL,TRANSPORT
5	SM24640	SCREW, .375-16 X 1.75 HX HD CAP
6	SM17686	LEVELING PAD
7	003-3680	(CS)ASSY,WLDMNT,MAINFRM,SC916
8	SM20188	MOUNT, SHOCK
9	SM21519	PULLEY,SPRING,4200/4400
10	SM21462	WASHER,FLAT, .38,SS
11	SM22143	RING,SNAP, 3/8"
12	SM13180	CAP,LEVELER,SC916
13	SM13152	BELT,1ST RDCTION,SC916
14	SM22026	SCREW, .250-20X1.00,HEX HD CAP
15	SM20008	LINK,MASTER,#41
16	SM22347	CHAIN,TRANSMISSION,4200/4400
17	SM22047	WASHER,FLAT,1/4 ID X 5/8 OD
18	SM22036	NUT, .250-20,NYLON INSERT
19	SM40661	RING,RETAINING,EXTERNAL,1.000
20	SM22427	SCREW,SET,SOCKET, .250-28 X .25
21	SM13069	PULLEY,1ST REDUCTION,SC916
22	SM17685	KEY, 0.190 X 0.190 X 1.380
23	003-3682	(CS)ASSY,SHFT/HUB,1ST RDUCTN,SC916
24	SM21654	KEY,WOODRUFF, .1871.185 X .625
25	SM20006	SPROCKET, BS14 #41 CHAIN
26	003-3681	(CS)ASSY,SHFT/HUB,2ND RDUCTN,SC916
27	SM13087	PULLEY,2ND RDCTION, SC916
28	SM13170	SPACER, ALTERNATER, SC916
29	SM22983	WASHER,SHOULDER, .25 ID,NYLON
30	SM22164	SCREW, .250-20X1.25,HEX HD CAP
31	SM13048	BELT, FLEX, POLY-V, 6 G, 14.29 C TO C
32	SM22029	NUT, .375-16,NYLON INSERT, HEX
33	SM22030	WASHER, FLAT, 3/8 ZINC PLTD
34	SM22191	WASHER, SHOULDER, .38 I.D.
35	SM13075	BRACKET, PEDAL CHAIN RETAINER
36	SM22097	SCREW, .375-16X2.75 HEX HD CAP
37	SM18020	WASHER, .257 X .620 X .010, MYLAR
38	SM20199	CHAIN, STEP
39	SM20768	CONNECTOR, SPRING CHAIN
40	SM20157	LINK, MASTER, #40
41	SM21093	SPRING, PEDAL RETURN
42	SM22878	SCREW, SET,0.25-28x0.375
43	SM13053	SPACER, PEDAL SHAFT
44	SM21298	LINK, DOUBLE PITCH W/SLEEVE
45	003-3683	(CS)KIT,LEVELING ARM,SC916
46	SM13003	ASSY,PEDAL ARM,LH,SC916
47	SM13005	ASSY,PEDAL ARM,RH,SC916
48	SM21366	WASHER,THRUST, .63 ID
49	003-3684	(CS)KIT,PEDAL,LH,SC916
50	003-3685	(CS)KIT,PEDAL,RH,SC916
51	SM12446	WASHER, WAVE
52	SM22140	WASHER, .635X1.00X.062,STEEL,ZINC

REF.	P/N	DESCRIPTION
53	SM22141	RING,SNAP,5/8",ZINC PLATED
54	SM20213	RING, SNAP 3/4"
55	SM21871	WASHER, 3/4", NARROW, FLAT
56	SM13052	SHAFT,PEDAL ARMS,SC916
57	SM22536	(CS)ASY,ALT,POLYV,4400CL,W/DSK
58	SM22027	WASHER, .250 SPLIT LOCK
59	SM22884	CLAMP,CABLE, 11/16" DIA.
60	SM21445	ASSY, .SPEED SENSOR,CLIM.SYS,CL
61	SM20206	RING, SNAP - INDUSTRIAL
62	SM13061	WASHER,THRUST,SC916
63	SM13062	BEARING,THRUST,SC916
64	003-3686	(CS)ASSY,SPRKT/CLUTCH,LH,SC916
65	003-3679	(CS)ASSY,SHFT/CNTR HUB,SC916
66	003-3687	(CS)ASSY,SPRKT/CLUTCH,RH,SC916
67	SM13175	ASSY,CONSOLE,SC916
69	SM13060-05	SPROCKET,20T,SC916
70	SM13054	ASSY,DRIVE HUB, SC916
71	SM22139	SCREW, .250 X .50,SELF TAPPING
72	SM17693	SCREW,#10-32 X 0.75,FLAT HD,PH
73	SM13092	ASSY,CONTROL BOARD,SC916
74	SM14123	5100 BATTERY KIT
75	SM17868	STANDOFF,NYLON,6-32 X 1/2,M/F
76	SM23054	NUT,#8-32,NYLON INSERT
77	SM13580	WASHER,#8 SAE FLAT
78	SM23609	WASHER,FLAT,#8 FENDER,
79	SM25079	SCREW,8-32 NC X .62 PHIL PAN
80	SM13101	ASSEMBLY,RESISTOR,RoHS
81	SM13207	END CAP,3", ROUND
82	002-0368	SCREW,5/16-18 X 2", HH,GR 5,BL
83	SM22075	FLAT WASHER
84	SM22032	NUT,5/16-18 NC NYLON INSRT HEX
85	SM25165	RECEIVER,PLUG-IN,POLAR
86	SM40236	FASTENER,HOOK
87	SM40235	FASTENER,LOOP
88	003-3690	(CS)ASSY,UPPR MAST W/DECAL,SC916
89	003-3703	(CS)ASSY,HNDRAIL,W/GRIP,SC916
90	002-0778	WASHER,FLAT,1/4 ID TYPE B,NARR
91	SM22164	SCREW, .250-20 x1.25,HEX HD
92	SM22205	NUT, JAM HEX, 1/2-13
93	SM22018	NUT, .312-18,HEX MACHINE
94	SM22070	WASHER, .312 SPIT LOCK
95	SM22165	SCREW, .312-18X1.00,HEX HD CAP
96	SM24162	SCREW,1/4-20X1/2",BUTTON HD SO
97	SM13042	ASSY,CHR HANDLE,SC916
98	001-6341	KIT,CHR,LOWER HANDLE
99	902-5855	SCREW,M3-0.5 X 20mm,PHIL,SS,PA
100	SM40670	SCREW,1/4-20X.75,PAN HD,W/LOCK
101	SM13125	CARGO TRAY,UPPER,SC916
102	SM40803	LENS,C51 CONSOLE
103	SM40802	HOUSING,CONSOLE,FRONT
104	SM40468	KEYPANEL,CNSL,RoHS,C51
105	SM40826	PCB ASS,C51 LCD DISPLAY



**SC9.16 STEPPER,DOM****(SM00130-001,-002,-004,-005)**

REF.	P/N	DESCRIPTION
106	SM40820	PCBA ASSY,C51 PROCESSOR
107	SM27767	IC, CONTACT HR W/MOUNT HEADER
108	003-3688	(CS)ASSY,REAR HOUSING,C51
109	SM13126	CARGO TRAY,LOWER,SC916
110	SM17578	WASHER,LOCK,INT.STAR,#10,SS
111	SM17815	SCREW,BUTTON HD CAP,10-32X5/8L
112	SM40443	SCREW,10-32 X 1.0, OVAL HD,PHL
113	SM13104	COVER,MID,SC916
114	SM13119	COVER,LWR PLUG,SC916
115	SM40654	SCREW,10-32X.75,PANHD W/LK WAS
116	SM13191	SCREW,1/4-20 X 2.50,PANHD
117	SM13195	ASSY,CVR,RH,W/DECALS,SC916
118	SM13196	ASSY,CVR,LH,W/DECALS,SC916
119	SM40836	ASSY,CABLE, VSL PLUG-IN, POLAR
120	SM13206	HRNESS,CONS TO PWR PCBA,SC916
121	SM13204	CABLE,T-BAR GRIP TO CONS,SC916
122	000-1490	ASSY,CABLE,LOAD RESIST,SC916
123	SM13205	CBL,HRNESS,ALT,SC916
124	SM13202	CBL,HRNESS,BATTERY,SC916
125	SM17841	ASSY,HARNESS,TV/PWR,EV916/E916
126	SM40456	SCREW,6-32X.38,PAN HD W/LKWASH
127	SM13157	PEDAL PAD, RH
128	SM13158	PEDAL PAD, LH
129	003-3702	HANDGRIP,SC916
130	SM27585	WASHER,.406 X .812 X .065,FLAT
131	SM22074	EDGE TRIM, RUBBER
132	SM13176	DECAL,CONSOLE TOP,SC9.16
133	SM22146	SCREW,.312-18X1.25,HEX HD CAP

**NOT SHOWN ON DIAGRAM**

	002-0677	POWER SUPPLY,9VDC,1.5A
	003-3754	KIT,OM,SC916,NORTH AMERICA
		WASHER, 1/4 x 1 1/4 FENDER